

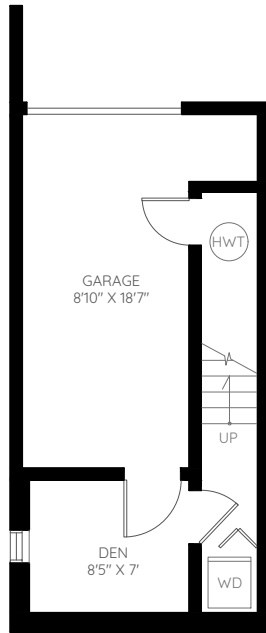
UNIT 2458 901 EAST BROADWAY

VANCOUVER, BC

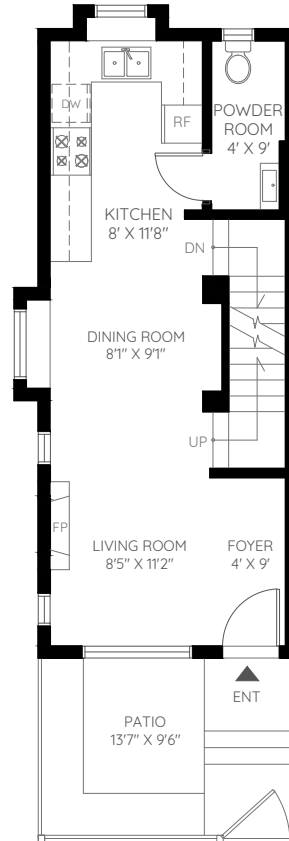
\$ 1,249,000

BASEMENT	180 SQ.FT.
MAIN	448 SQ.FT.
SECOND	448 SQ.FT.
THIRD	296 SQ.FT.
FINISHED	1,372 SQ.FT.

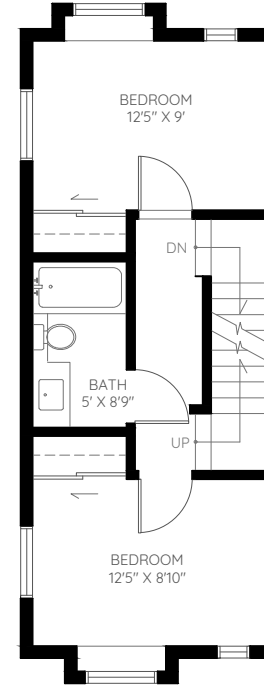
GARAGE	215 SQ.FT.
BALCONY	40 SQ.FT.
PATIO	128 SQ.FT.
UNFINISHED	383 SQ.FT.



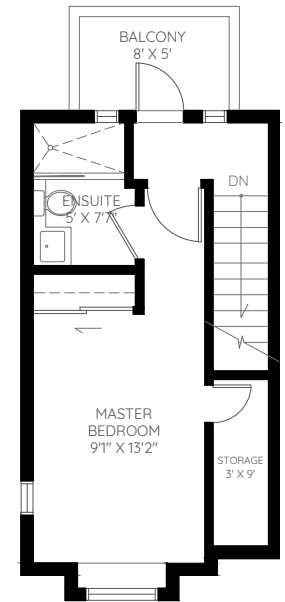
BASEMENT
180 SQ.FT.
CEILING HEIGHT : 8'



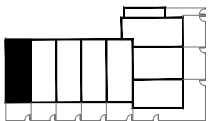
MAIN
448 SQ.FT.
CEILING HEIGHT : 8'



SECOND
448 SQ.FT.
CEILING HEIGHT : 8'



THIRD
296 SQ.FT.
CEILING HEIGHT : 8'



The floor plan and the measurements are approximate and are to be used for advertising usage only. Not suitable for architectural or construction. The developer reserves the right to make changes and modifications to the information contained herein without prior notice. Dimensions, sizes, areas, specifications, layouts and materials are approximate only and subject to change without notice. E&OE. © 2018 KEYPLAN Measuring Inc.