

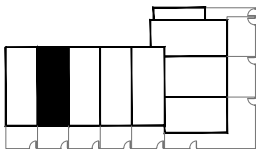
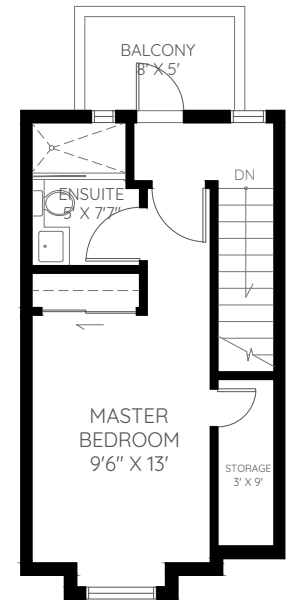
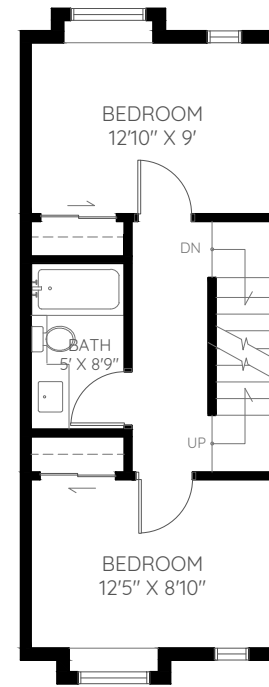
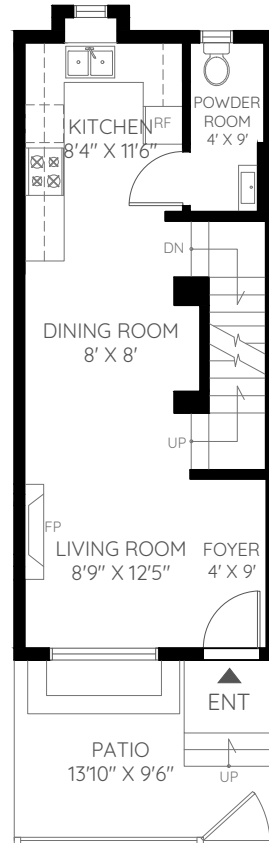
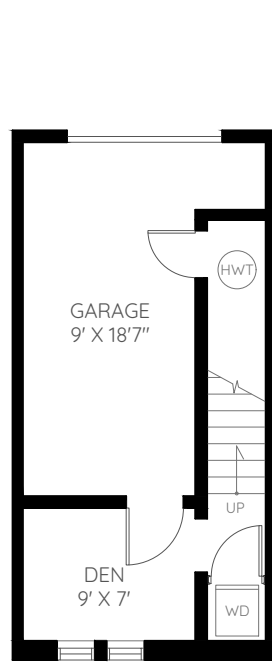
UNIT 2468 901 EAST BROADWAY

VANCOUVER, BC

\$ 1,239,000

BASEMENT	183 SQ.FT.
MAIN	456 SQ.FT.
SECOND	456 SQ.FT.
THIRD	300 SQ.FT.
FINISHED	1,395 SQ.FT.

GARAGE	202 SQ.FT.
BALCONY	40 SQ.FT.
PATIO	130 SQ.FT.
UNFINISHED	372 SQ.FT.



BASEMENT
183 SQ.FT.
CEILING HEIGHT : 9'2"

MAIN
456 SQ.FT.
CEILING HEIGHT : 8'

SECOND
456 SQ.FT.
CEILING HEIGHT : 8'

THIRD
300 SQ.FT.
CEILING HEIGHT : 8'

The floor plan and the measurements are approximate and are to be used for advertising usage only. Not suitable for architectural or construction. The developer reserves the right to make changes and modifications to the information contained herein without prior notice. Dimensions, sizes, areas, specifications, layouts and materials are approximate only and subject to change without notice. E&OE. © 2018 KEYPLAN Measuring Inc.