

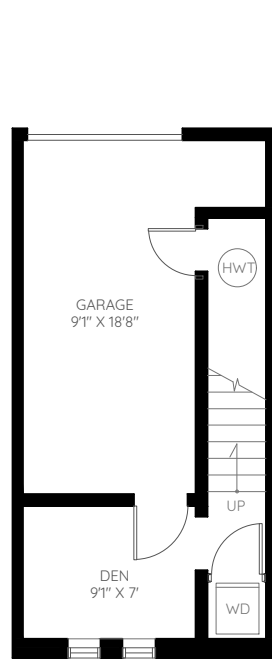
UNIT 2478 901 EAST BROADWAY

VANCOUVER, BC

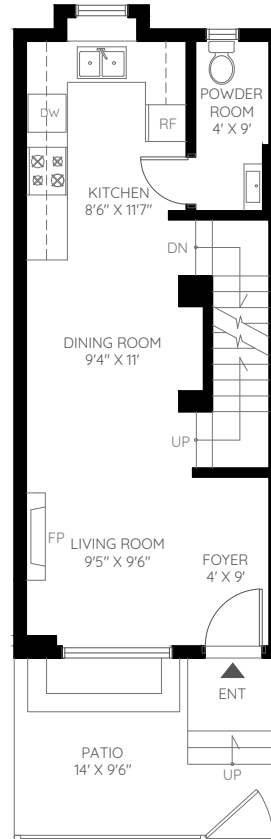
\$ 1,239,000

BASEMENT	183 SQ.FT.
MAIN	460 SQ.FT.
SECOND	460 SQ.FT.
THIRD	292 SQ.FT.
FINISHED	1,395 SQ.FT.

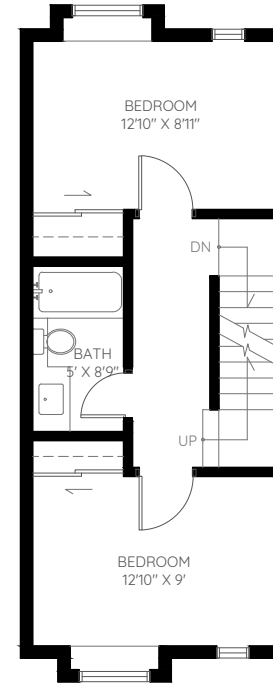
GARAGE	202 SQ.FT.
BALCONY	40 SQ.FT.
PATIO	132 SQ.FT.
UNFINISHED	374 SQ.FT.



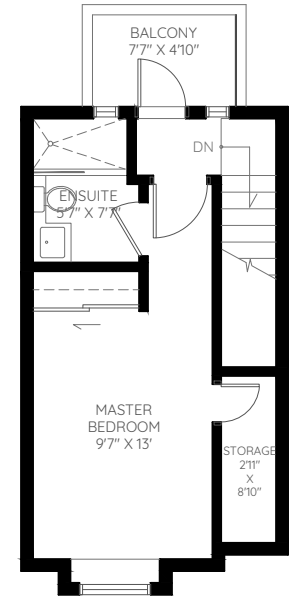
BASEMENT
183 SQ.FT.
CEILING HEIGHT : 9'2"



MAIN
460 SQ.FT.
CEILING HEIGHT : 8'



SECOND
460 SQ.FT.
CEILING HEIGHT : 8'



THIRD
292 SQ.FT.
CEILING HEIGHT : 8'

