

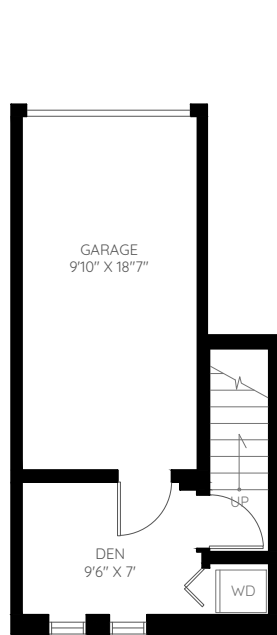
UNIT 2496 901 EAST BROADWAY

VANCOUVER, BC

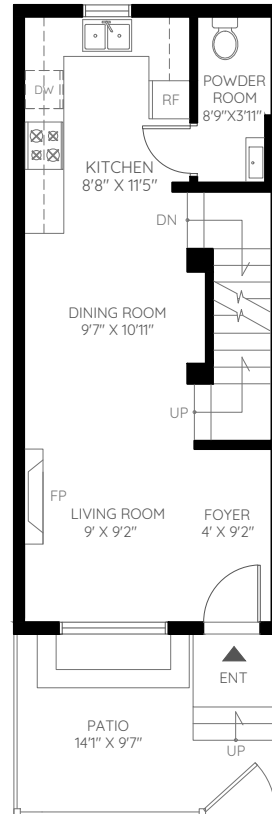
\$ 1,229,000

BASEMENT	155 SQ.FT.
MAIN	466 SQ.FT.
SECOND	466 SQ.FT.
THIRD	308 SQ.FT.
FINISHED	1,395 SQ.FT.

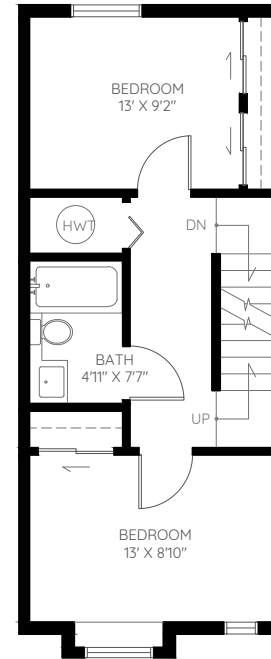
GARAGE	195 SQ.FT.
BALCONY	53 SQ.FT.
PATIO	132 SQ.FT.
UNFINISHED	380 SQ.FT.



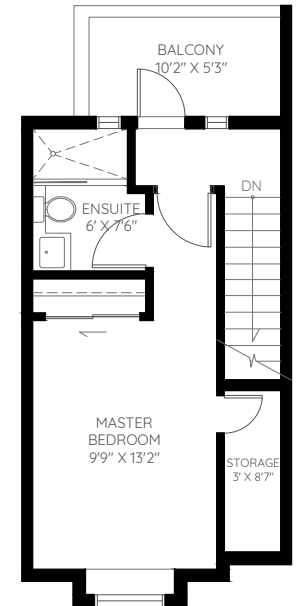
BASEMENT
155 SQ.FT.
CEILING HEIGHT : 9'2"



MAIN
466 SQ.FT.
CEILING HEIGHT : 8'



SECOND
466 SQ.FT.
CEILING HEIGHT : 8'



THIRD
308 SQ.FT.
CEILING HEIGHT : 8'



The floor plan and the measurements are approximate and are to be used for advertising usage only. Not suitable for architectural or construction. The developer reserves the right to make changes and modifications to the information contained herein without prior notice. Dimensions, sizes, areas, specifications, layouts and materials are approximate only and subject to change without notice. E&OE. © 2018 KEYPLAN Measuring Inc.