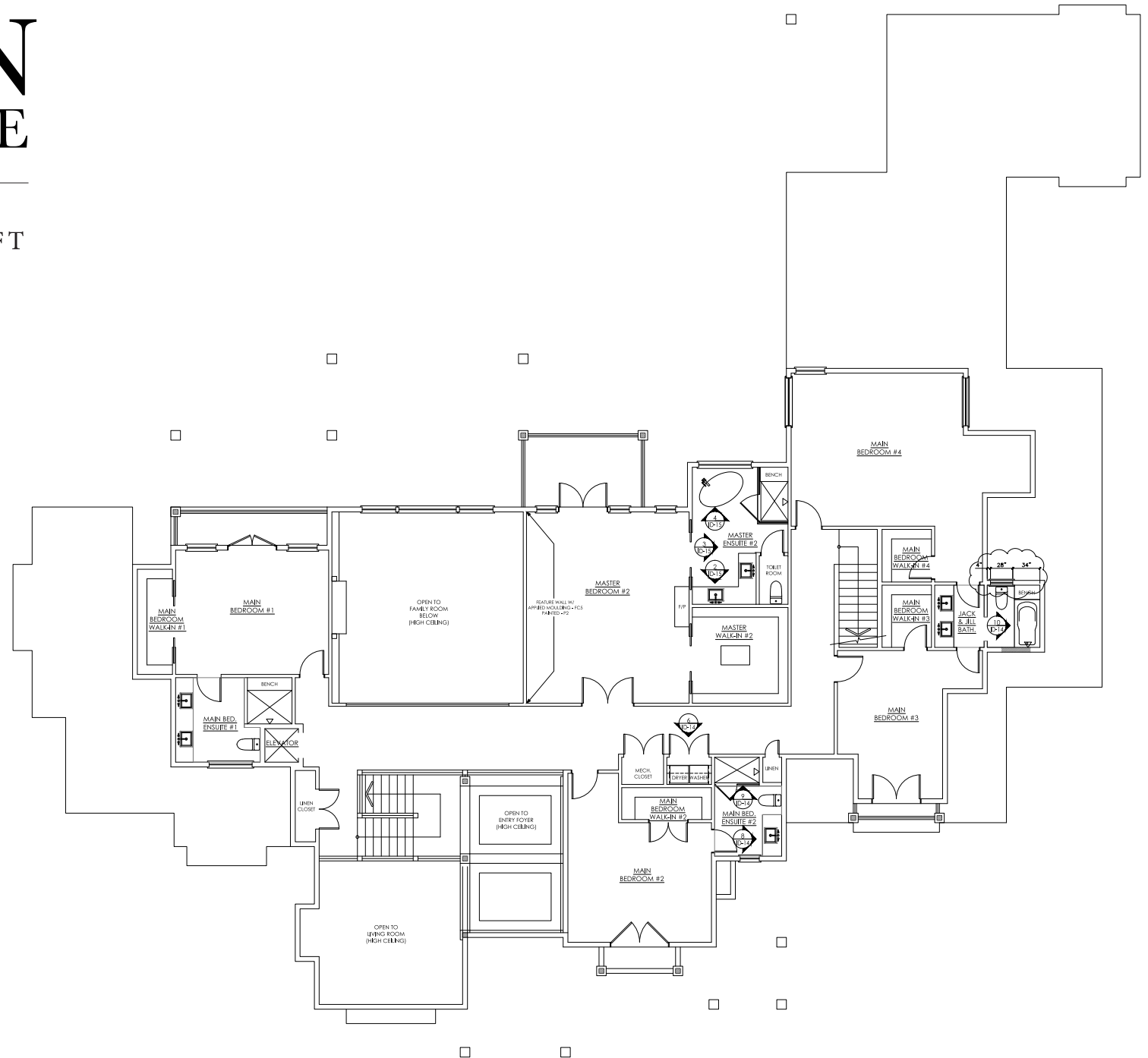


# ELGIN RESIDENCE

UPPER | 2,649 SQ FT



In our continuing effort to improve and maintain the high standard of this home, the developer reserves the right to modify or change plans, specifications, features and prices without notice. Materials may be substituted with equivalent or better at the developer's sole discretion. All dimensions and sizes are approximate and are based on architectural measurements. As reverse and/or mirrored plans occur throughout the development please see architectural plans for exact plan unit layout if important to you. Illustrations, renderings and marketing materials provided are an artist's conception and are intended as a general reference only and are subject to change without prior notice. Please refer to disclosure statement for specific offering details. E. & O. E.

