

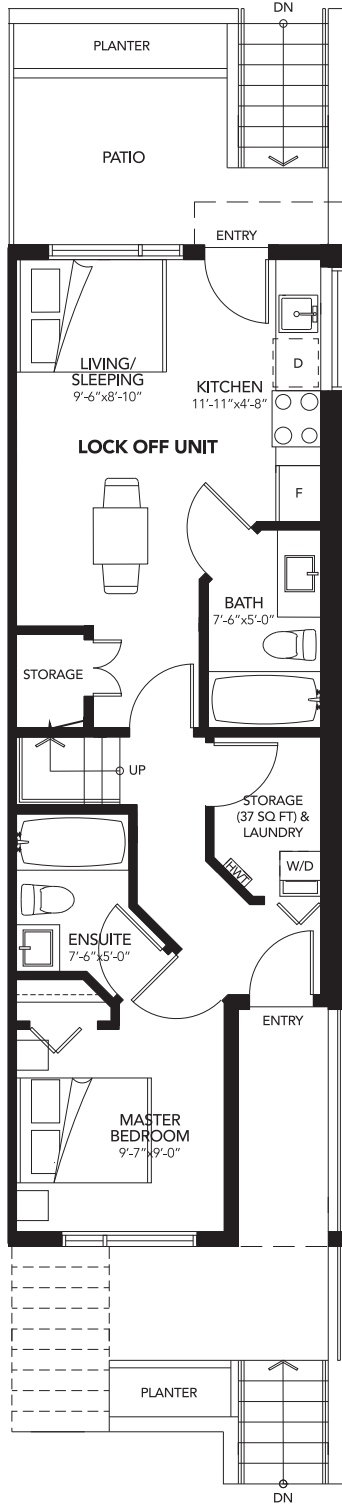
UNIT 1

5073 CHAMBERS STREET

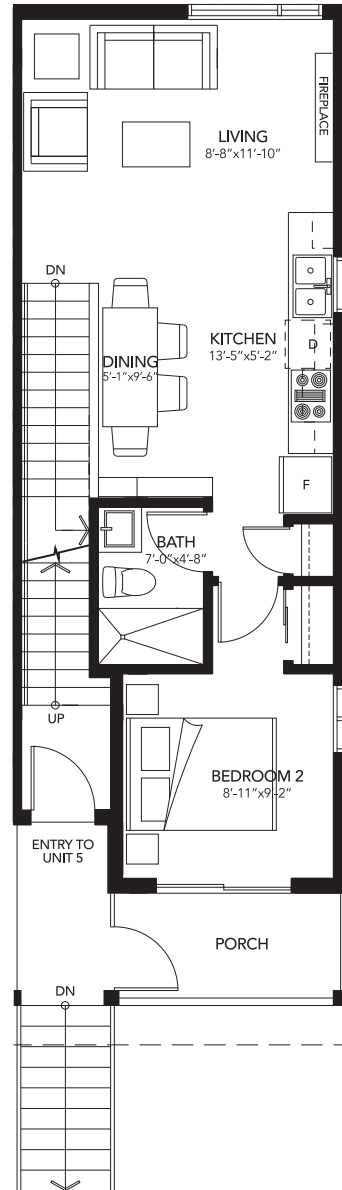
1,104 SQ FT + STORAGE (37 SQ FT)

5071 CHAMBERS STREET (LOCK OFF UNIT)

282 SQ FT



BASEMENT LEVEL
579 SQ FT (UNIT) | 282 SQ FT (LOCK OFF)



GROUND LEVEL
525 SQ FT

In our continuing effort to improve and maintain the high standard of the Fifty73 on Chambers development, the developer reserves the right to modify or change plans, specifications, features and prices without notice. Materials may be substituted with equivalent or better at the developer's sole discretion. All dimensions and sizes are approximate and are based on architectural measurements. As reverse and/or mirrored plans occur throughout the development please see architectural plans for exact plan unit layout if important to you. Illustrations, renderings and marketing materials provided are an artist's conception and are intended as a general reference only and are subject to change without prior notice. Please refer to disclosure statement for specific offering details, E, & O, E.

