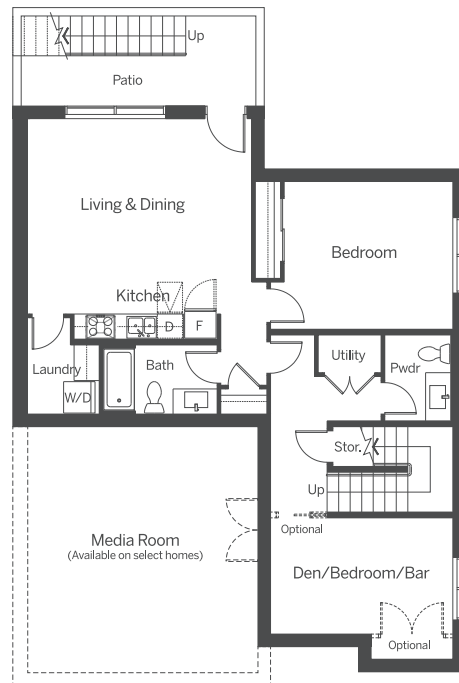


# OPTION 1A

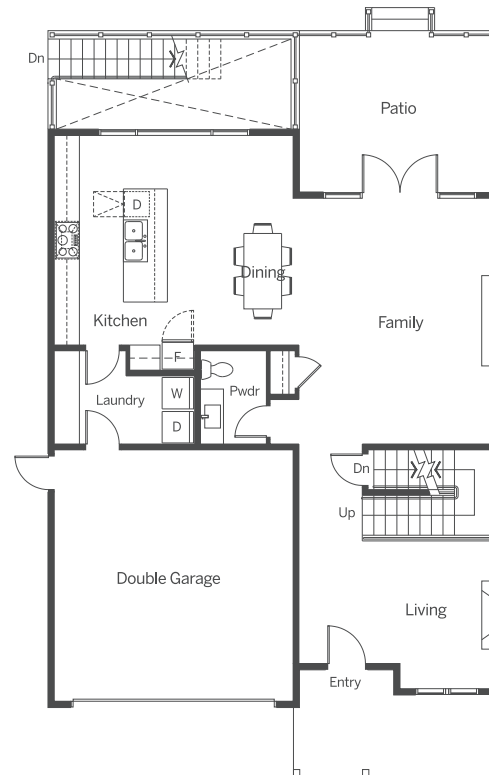
**3,470 SQ FT**

Excluding Garage (415 sq ft)

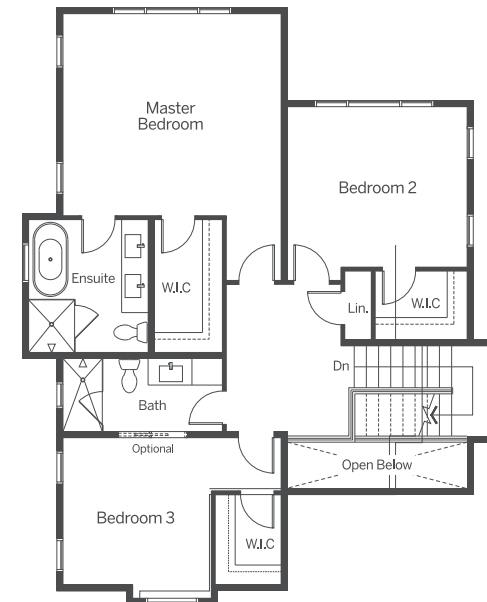
# FRASER HEIGHTS



**LOWER**  
1,144 SQ FT



**MAIN**  
1,130 SQ FT



**UPPER**  
1,196 SQ FT

In our continuing effort to improve and maintain the high standard of the Fraser Heights development, the developer reserves the right to modify or change plans, specifications, features and prices without notice. All dimensions and sizes are approximate and are based on architectural measurements. As reverse and/or mirrored plans occur throughout the development please see architectural plans for exact plan unit layout if important to you. Illustrations, renderings and marketing materials provided are an artist's conception and are intended as a general reference only and are subject to change without prior notice. Please refer to disclosure statement for specific offering details, E, & O, E.

